

DINO[®] 240RXT

Rough Terrain Access



TECHNICAL SPECIFICATION ON **DINO® 240RXT**

PERFORMANCE

Working height	24.0 m	78'10"
Platform height	22.0 m	72'
Maximum outreach (80 kg/175 lbs)	12.1 m	39'10"
Lifting capacity	215 kg	475 lbs
Boom rotation	continuous	
Basket rotation	90°	
Support length	4.4 m	14'4"
Support width	4.0 m	13'2"
Allowed ground inclination	10°	
Inner turning radius	2.15 m	7'
Outer turning radius	5.3 m	17'5"

DIMENSIONS

Basket size	0.7 x 1.3 m	2'4" x 4'3"
	0.9 x 1.55 m	2'11" x 4'3"
Transport length	6.65 m	21'10"
Transport width	1.99 m	6'6"
Transport height	2.29 m	7'6"
Weight	4250 kg	9370 lbs

CHASSIS

Gradeability	35%	
Drive speed (high/low)	4.7/1.5 km/h	2.9/0.9 mph
Four wheel drive	standard	
Steering	2-WS / 4-WS / crab steering	
Tyres	pneumatic, 280/60-15.5	

POWER SOURCE

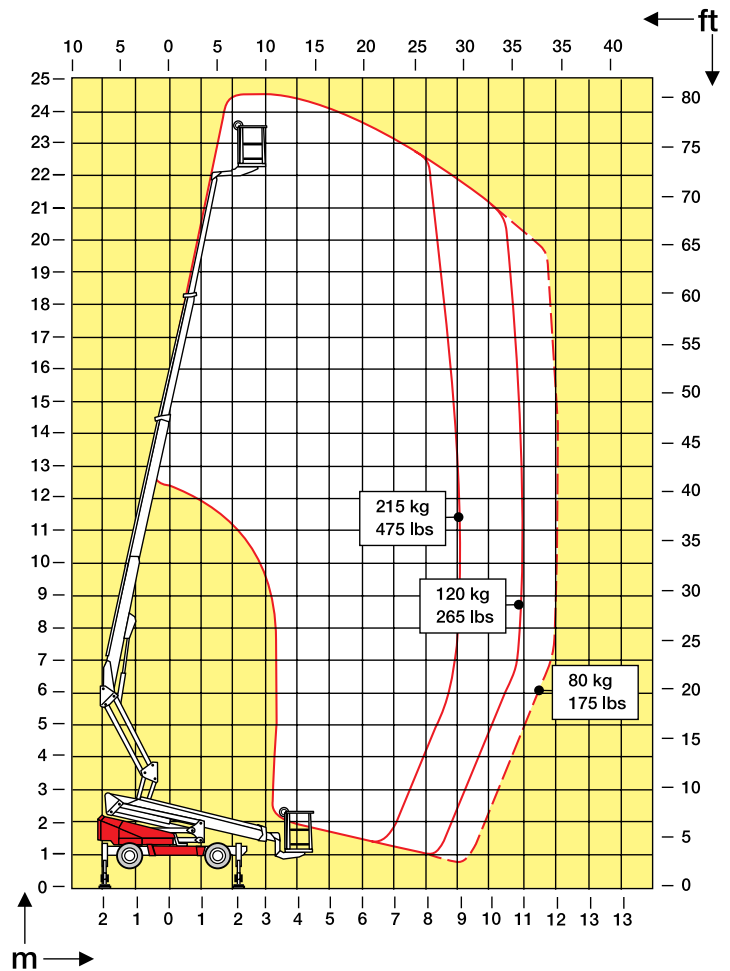
Diesel engine	Caterpillar 3003, 17.5 kW (23.5 hp)/3600 rpm
---------------	---

OTHER STANDARD FEATURES

Boom control	proportional
Level control	electrical, with LED-display

OPTIONS

Tyres	pneumatic, 12-16.5
Power source	electric motor (230 V) for boom motions
Outrigger control	automatic levelling system

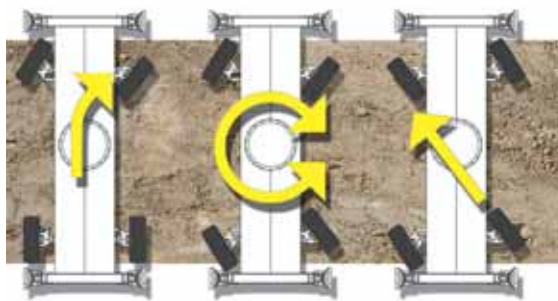


The specification is subject to change without notice.

02/2005 Pritimuspaino Oy



All driving and boom functions are operated from the well-designed panel.



Four-wheel-drive and three different steering alternatives.



Maintenance of the modern and reliable hydraulic & control systems is easy.

DINO® and Dino Lift® are trademarks registered by the company Dino Lift Oy

Manufacturer

DINO Lift®

Dino Lift Oy
Raikkolantie 145, FI-32210 LOIMAA KK, Finland
Tel. +358 2 7625 900, Fax +358 2 7627 160
email: dino@dinolift.com
www.dinolift.com

Dealer