



## FALCON SPIDER FS 370



Photo: FALCON.SPIDER Hawaii Convention Centre

The FALCON SPIDER is based on more than 40 years of development and manufacture of aerial access platforms. The concept was invented in the 1970's by the company WORLIDLIFT INDUSTRIES AS (former E. Falck Schmidt A/S) and introduced to the market in the beginning of the 80's, and since then delivered for various applications all over the world.

The SPIDER serial is produced in working heights from 17 m. to 55 m. (highest compact platform in the world). All models are specially designed for maintenance work in tall buildings with narrow access and limited floor space, which requires a *compact, flexible, and high-reaching* platform.

Key performances like: Compact design, flexibility, reliability, low weight, high reach and maximum safety are all features that experienced users all over the world value every day. New features such as the double link jib system, automatic set up, raising/lowering of the outriggers, and driving the FALCON SPIDER from the basket are all added features to make the use of the FALCON SPIDER even quicker, and more user friendly than ever before.

## Technical data

### Standard equipment

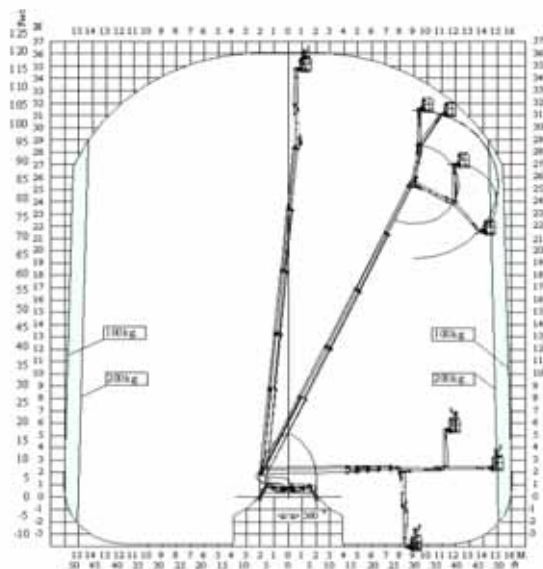
|                            |                       |
|----------------------------|-----------------------|
| Working height:            | 37 m/121 feet         |
| Basket height:             | 35,2 m/115 feet       |
| Turret rotation:           | 375°                  |
| Double jib arm:            | 2x180°                |
| Jib arm (2x3m):            | 6 m./20 feet          |
| Basket (aluminium):        | (W x L : 0,8m x 1,4m) |
| Basket load:               | 200 kg/440 lbs        |
| Rotating basket (optional) | 2x90°                 |

### Measurements (Transport position):

|                      |                      |
|----------------------|----------------------|
| Total height:        | 1,98 m/6.6 feet      |
| Total length:        | 8,10 m/26 feet       |
| Total width:         | 0,89/2.9 feet        |
| Gradability (up to): | 10°/approx. 20%*     |
| Weight approx.       | 7200 kg*/15.875 lbs* |

\* Depending on optional equipment.

## Reach diagram



## Standard performance and features:

- Access through 0,9 m wide x 2,0 m high door openings, *allows operation in buildings where the entrance is narrow.*
- Working height up to 37 m.
- 220V chargable battery power system, *ensures quiet, pollution free operation. Primary for indoor use.*
- Full hydraulic jib arm system with individual movements. *The two jibarms ensures maximum flexibility to enable working over, below, and behind obstacles.*
- 375° turret rotation, with integrated stop.
- Individual setting of outriggers controlled by hydraulic valve.
- The hydraulic/manual outriggers can be leveled on a slope of 8,5°.
- Due to it's unique outrigger design, the FALCON SPIDER can self-load onto flatbed trucks or trailers.
- 2x180° double jib arm (6 m) *ensures maximum flexibility to enable working over, below and behind obstacles.*
- Proportional control of all functions via joysticks, operated from inside the basket, *ensures smooth movements with a gradual start/stop function.*
- Automatic safety and stability system *ensures optimum outreach and maximum safety.*
- Electronic checking of the power system, *enables easy and quick trouble shooting, and helps to reduce breakdowns.*
- Manual pump system for lowering the basket in case of emergency, *ensures that the FALCON SPIDER can always be stowed away for transport .*

## Optional equipment

For customers with special wishes a wide range of options are available

- Autosetting and levelling of the outrigger from basket, *allows fast and safe operation*
- Chassis steering from inside basket.
- 2x90° hydraulic rotating basket, *ensures that the basket is always parallel to the work surface.*
- 360° continuous turret rotation.
- Outriggers with “knee joint”, *ensures maximum flexibility for outrigger set up*
- 220V power supply in the basket.
- 4-wheel drive system (Gradability up to 10°/ 20%) (min. width 0,99m).
- Special colour according to customer request.
- Basket in various sizes.
- Rubber clad outrigger plates, *enables set-up on sensitive surfaces.*
- Diesel system, *ensures fast and time saving operation.*
- Petrol 220V generator, *enables independency of 220V main supply*

**The original SPIDER®**  
*- the safe choice for the future*